

**Robert
Scott**[®]
Serious cleaning know-how



3-piece handle



Easy post

New and improved 3-Piece Handle designed to reduce the cost of shipping.

The versatile 3-Piece Handle is ideal for reducing the cost of shipping for what is normally a bulky item as the 137cm handle is supplied in three sections which measure just 55cm each.

The handle features a screw thread similar to the Hygiene Handle and fits the majority of socket mops, brooms and squeegees, as well as the Exel fitting. It is designed with anti-clockwise fixings to prevent loosening while removing the mop head, and connects to make a 137cm handle.

The 3-Piece Handle comes as standard with a neutral, grey end cap, and coloured cap accessories are sold separately (104108).

Key features & benefits



Innovation



Easy post



Multi-purpose

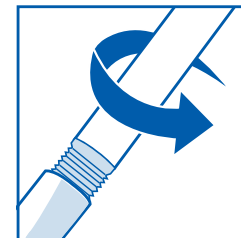


Money saving

- Lightweight, sturdy and versatile handle that fits a wide range of fittings.
- Secure anti-clockwise screw-threads fitting secures the handle together.
- Ergonomic end cap fits perfectly into the palm.
- Colour coded end caps available separately.

User instructions

Simply twist the three parts together in an anti-clockwise direction, then screw clockwise into any of the screw-thread fittings you are using.



Handle is designed with two anti-clockwise screw threads to prevent loosening while removing the mop head.

Related products

Mops, Washable Brooms, Deck Scrub, Squeegees and much more.

Code	Product	Size	Colour	Qty
105143	3-Piece Handle	55x8cm	●	10
104108	Coloured Caps	5x3cm	● ● ● ●	10

To place an order, ask for a sample, request a quote or arrange a demo please call **01457 819400**, or email **info@robert-scott.co.uk**